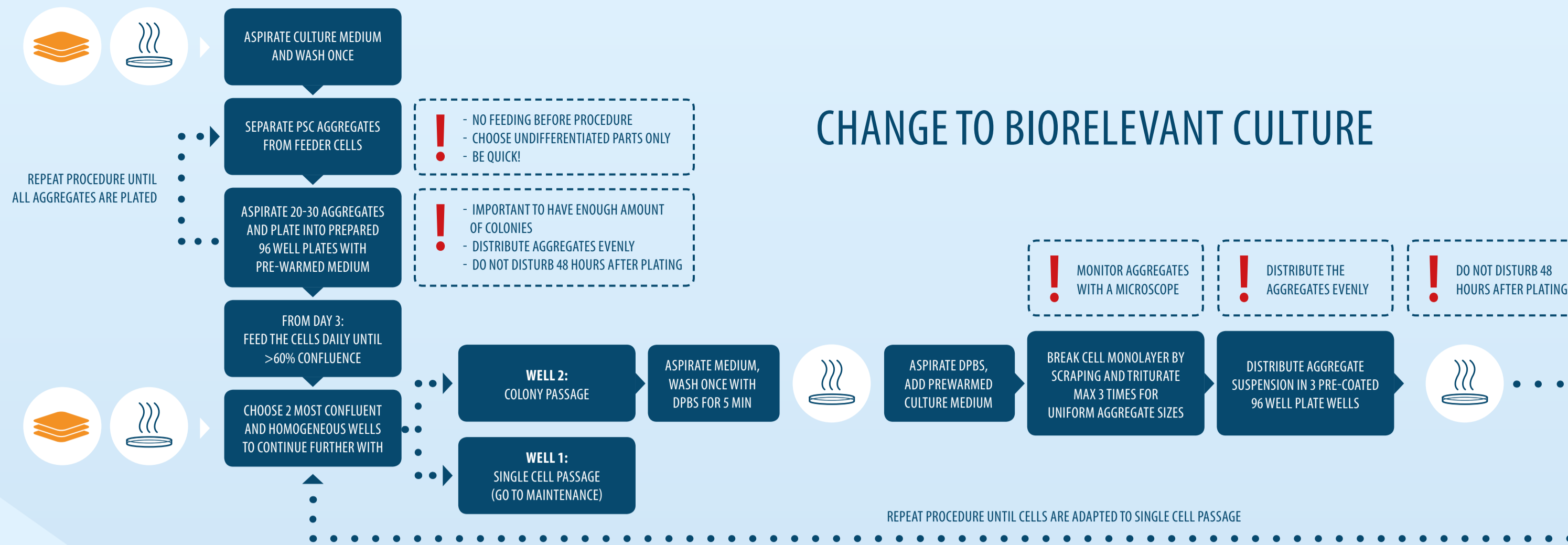




COAT (CAN BE SKIPPED IF YOU USE 521-TO-GO)

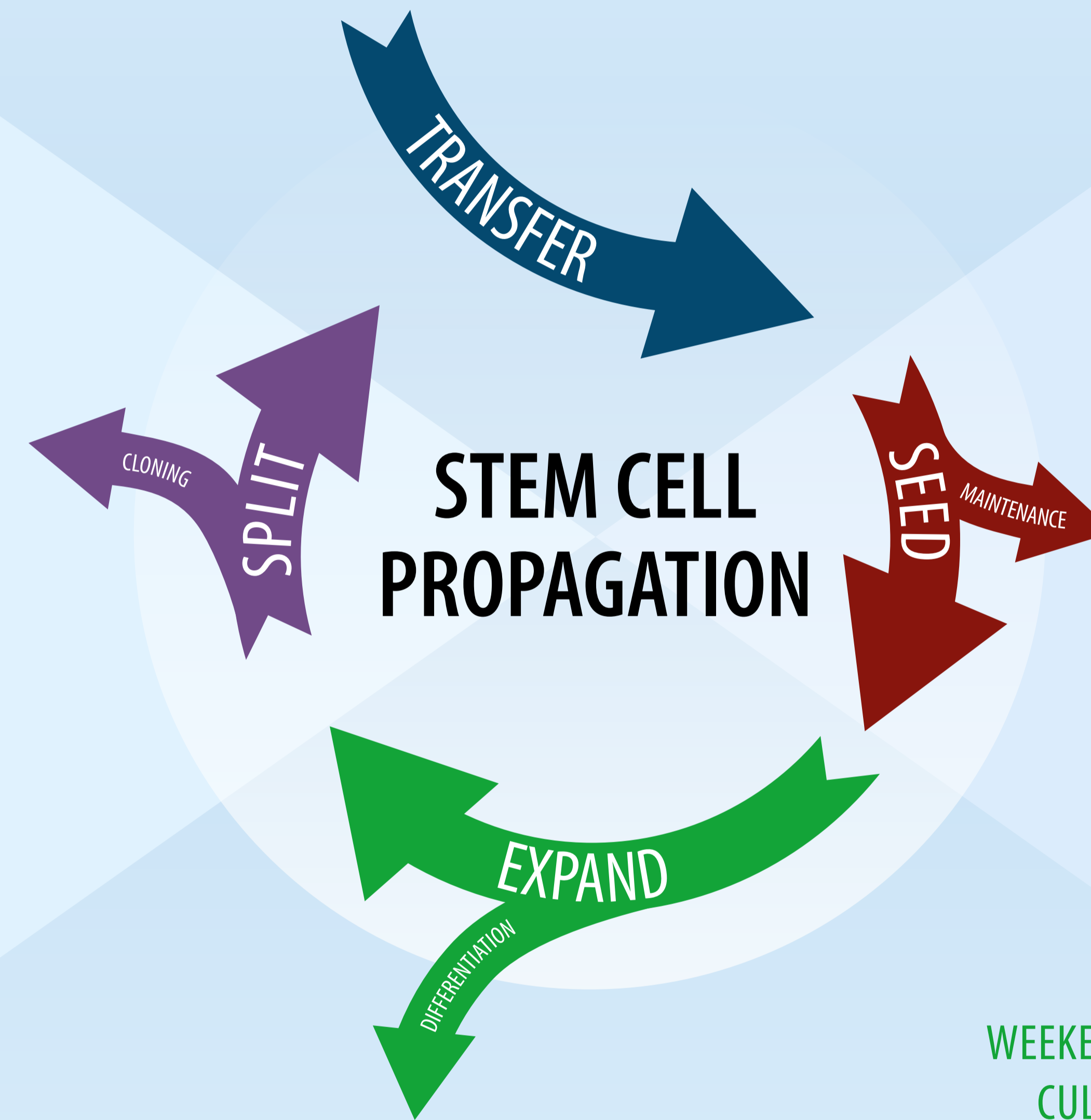
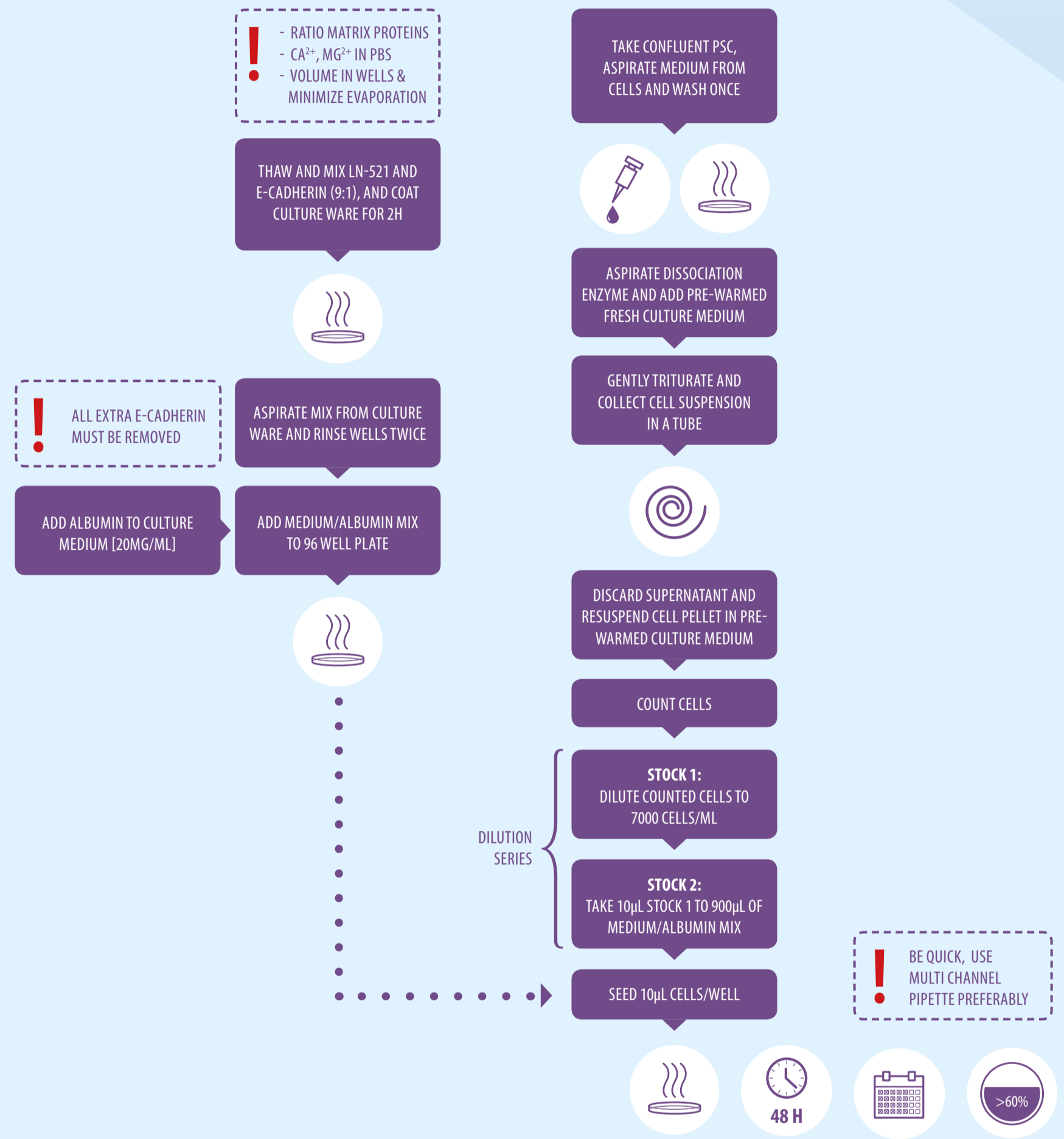


LEGEND

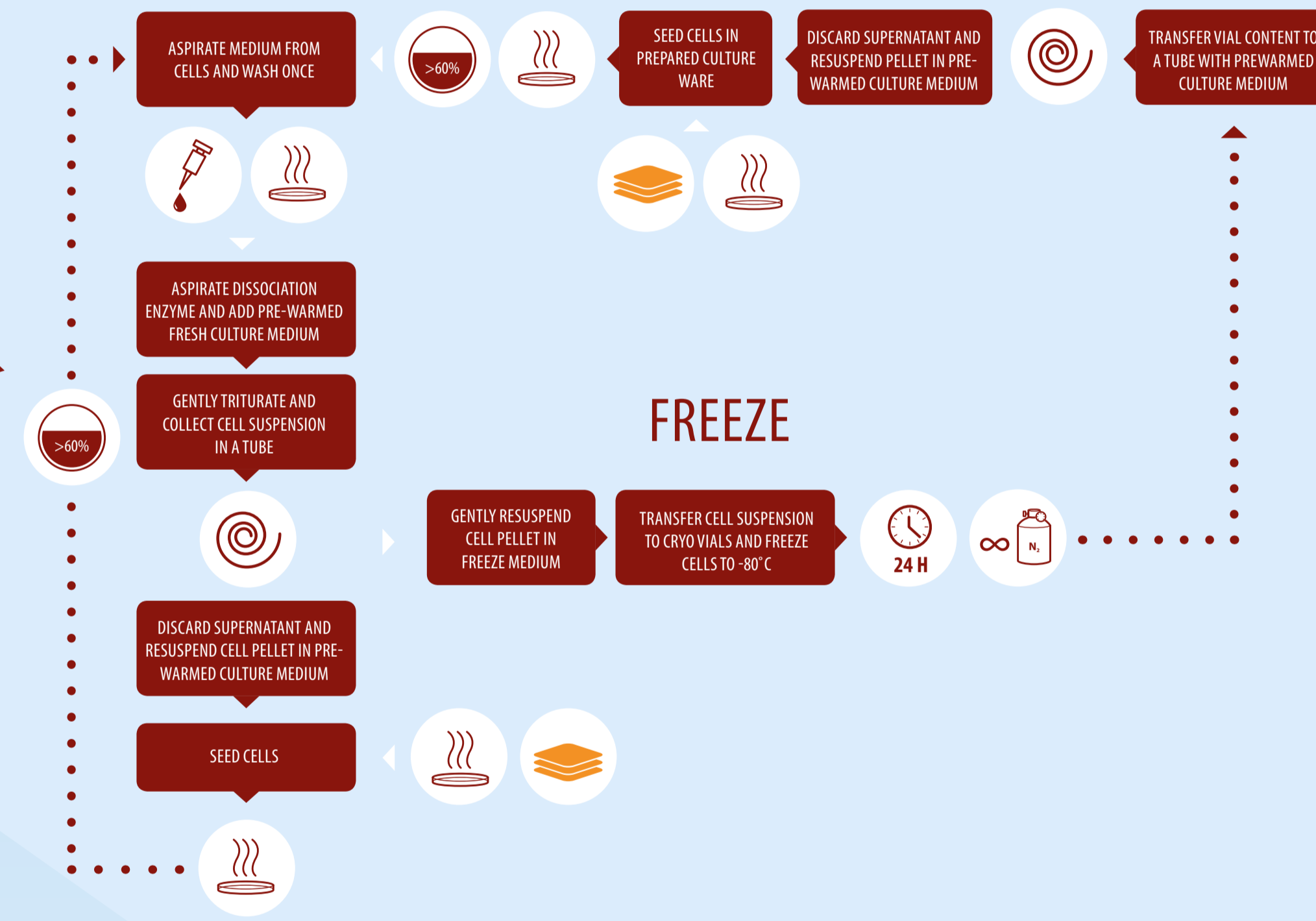
- INCUBATE
- COAT
- CENTRIFUGE
- SPLIT WHEN >60%
- MOVE TO LIQUID N2 FOR LONG TERM STORAGE
- FEEDING SCHEDULE
- DO NOT DISTURB
- ADD ENZYME

NOTES

CLONAL CULTURE



SINGLE CELL CULTURE



NOTES

NOTES

AUTOMATION

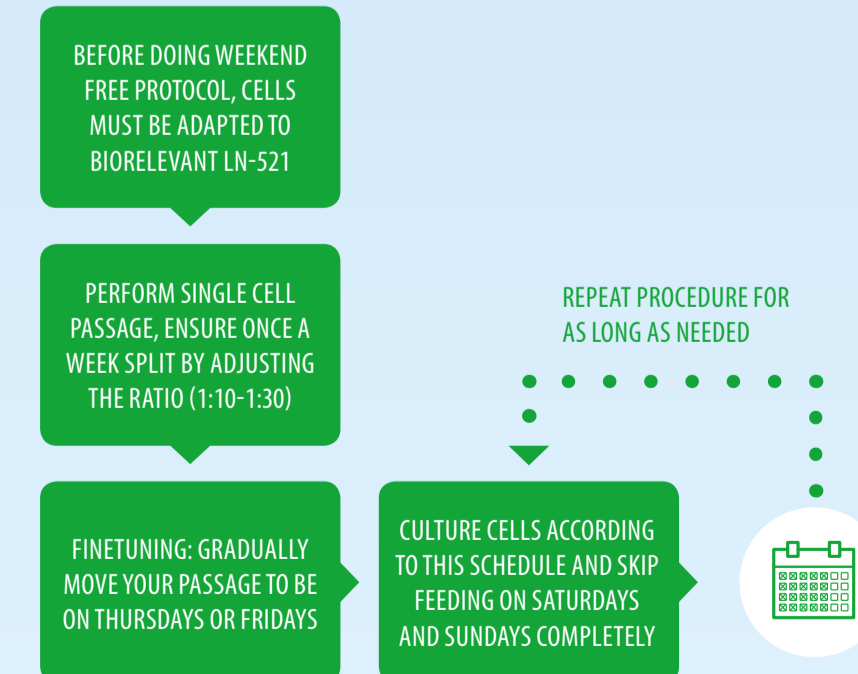
- NO MANUAL SELECTION NEEDED: AVOIDS ARBITRARY CRITERIA
- EFFICIENT BANKING: LARGE PSC STOCKS OF LOW PASSAGE CELLS
- DEFINED MATRIX: REPRODUCIBLE RESULTS, RELIABLE PROTOCOLS

PROGENITORS & MATURE CELLS



READ MORE ON EACH CELL TYPE AND WHICH LAMININ TO USE FOR YOUR CELL CULTURE IN THE APPLICATION SECTION OF THE SCIENCE ROOM

WEEKEND FREE CULTURE



NOTES
